

For Sale or Build-to-Suit
Development Land
Starting at \$3.50/Sq. Ft.



60th Street North Land

60th Street North & Westport Avenue
Sioux Falls, SD

Property Features

- Up to 20+ acres available for sale or build-to-suit
- May be divided
- Excellent access to I-29, I-90, and the Sioux Falls Regional Airport
- Recent construction in the area includes Army Reserve, Baete-Forseth, Sherwin Williams, Cimarron Label, PREMIER Bankcard, Esurance, and University Center

Price

- List Price starting at \$3.50/sq. ft.

Location

- Located at the southeast corner of 60th Street North (SD Hwy 38) and Westport Avenue
- 2016 Traffic Count for 60th Street North is 12,900 vehicles per day



Craig Hagen, CCIM, SIOR

+1 605 444 7115 Office

+1 605 310 4227 Cell

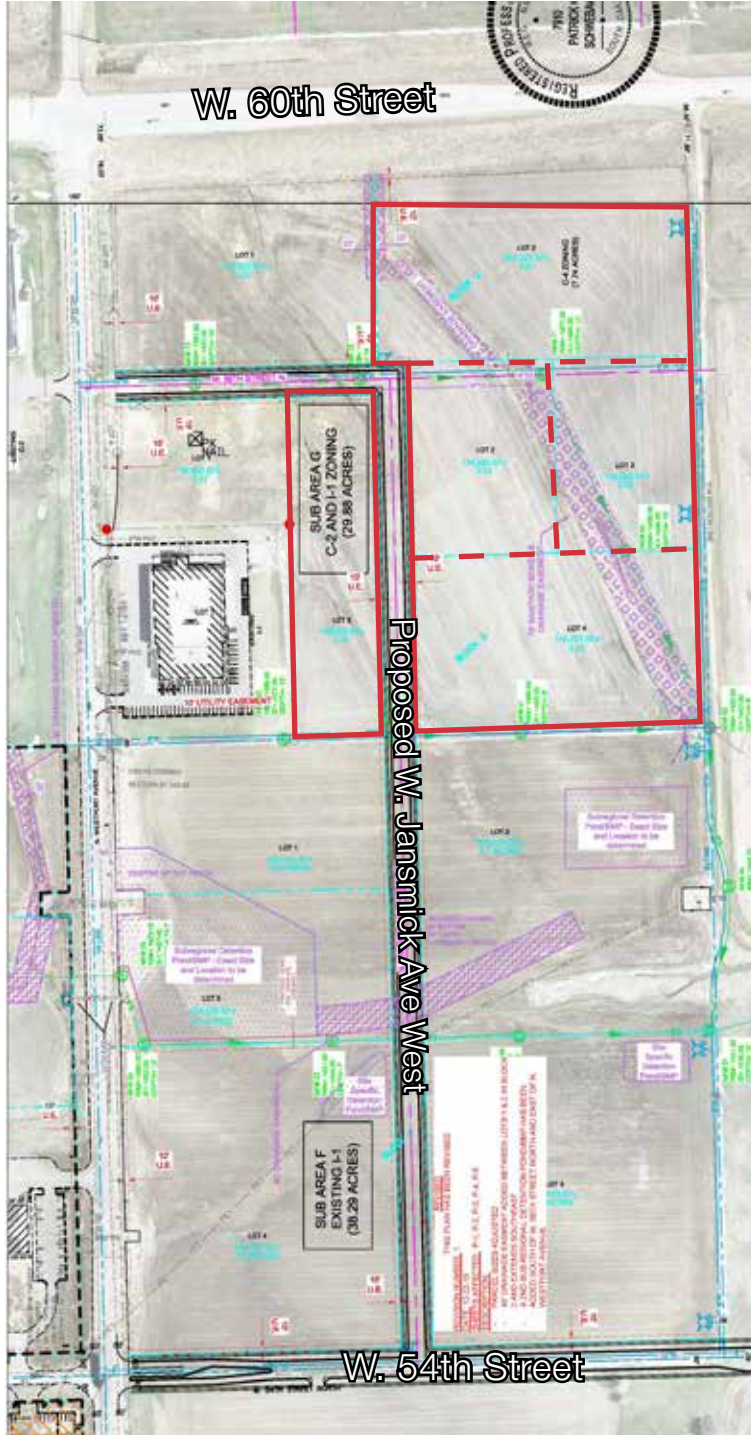
chagen@naisiouxfalls.com

NO WARRANTY OR REPRESENTATION, EXPRESS OR IMPLIED, IS MADE AS TO THE ACCURACY OF THE INFORMATION CONTAINED HEREIN, AND THE SAME IS SUBMITTED SUBJECT TO ERRORS, OMISSIONS, CHANGE OF PRICE, RENTAL OR OTHER CONDITIONS, PRIOR SALE, LEASE OR FINANCING, OR WITHDRAWAL WITHOUT NOTICE, AND OF ANY SPECIAL LISTING CONDITIONS IMPOSED BY OUR PRINCIPALS NO WARRANTIES OR REPRESENTATIONS ARE MADE AS TO THE CONDITION OF THE PROPERTY OR ANY HAZARDS CONTAINED THEREIN ARE ANY TO BE IMPLIED.

2500 W. 49th Street, Suite 100
Sioux Falls, SD 57105
+1 605 357 7100

naisiouxfalls.com

For Sale or Build-to-Suit
Development Land



For Sale or Build-to-Suit
Development Land



60th Street North Land

60th Street North & Westport Avenue
Sioux Falls, SD



NASioux Falls

2500 W. 49th Street, Suite 100
Sioux Falls, SD 57105
+1 605 357 7100
naisiouxfalls.com